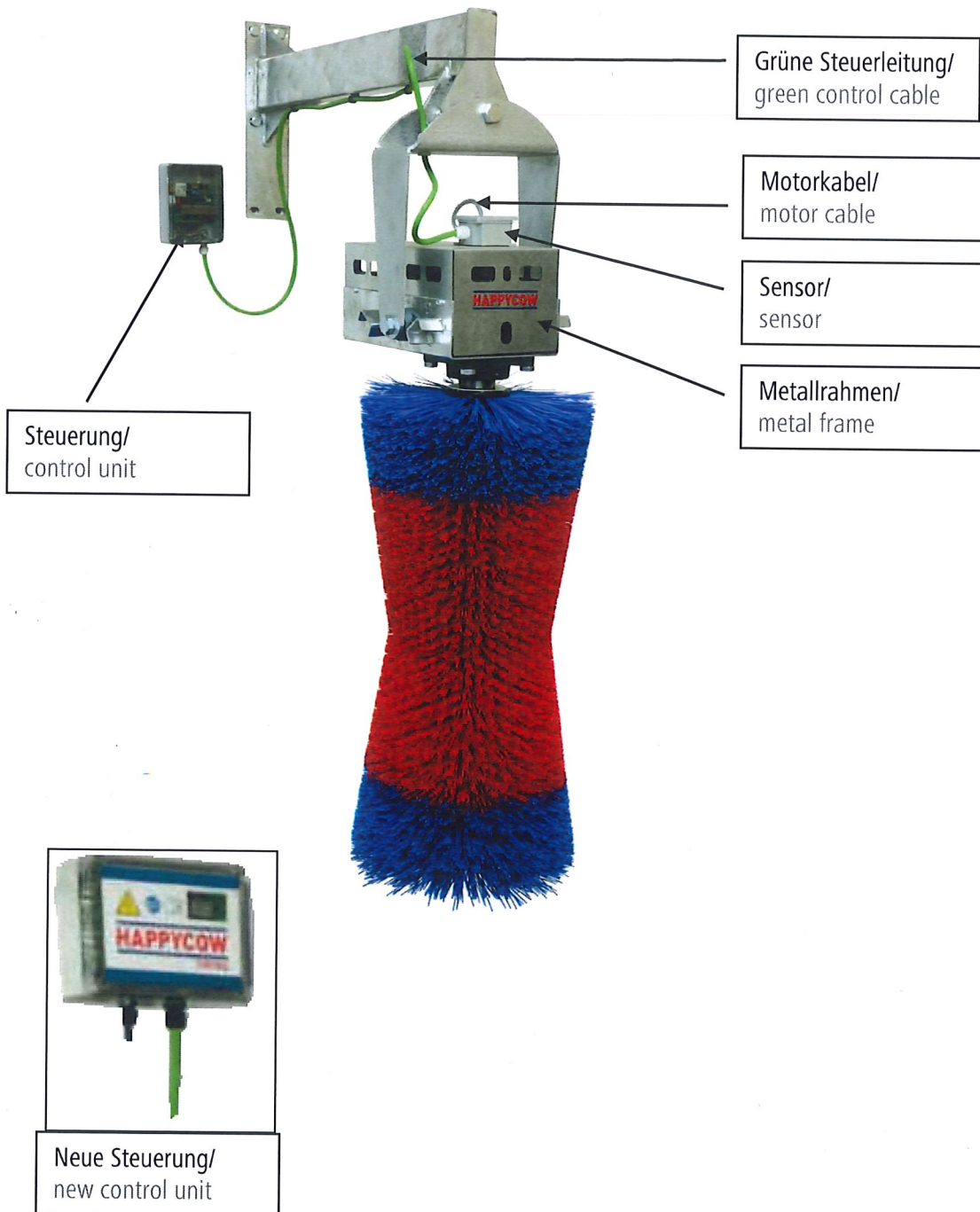
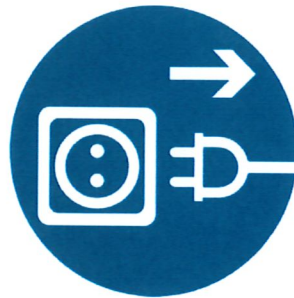


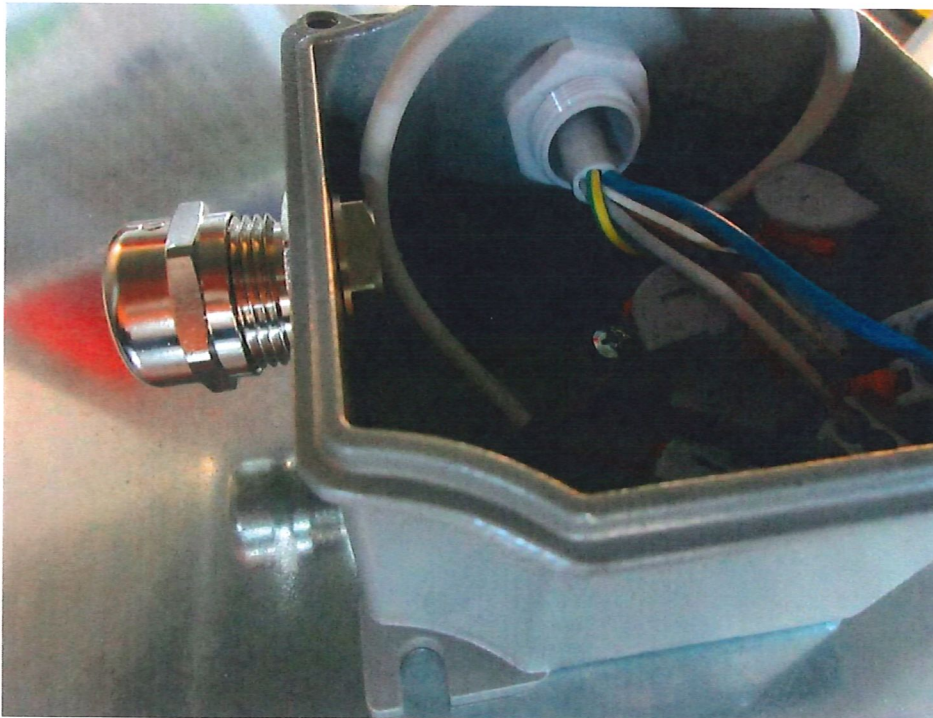
## Umbauanleitung auf Steuerung 2021 für #18880, #18870



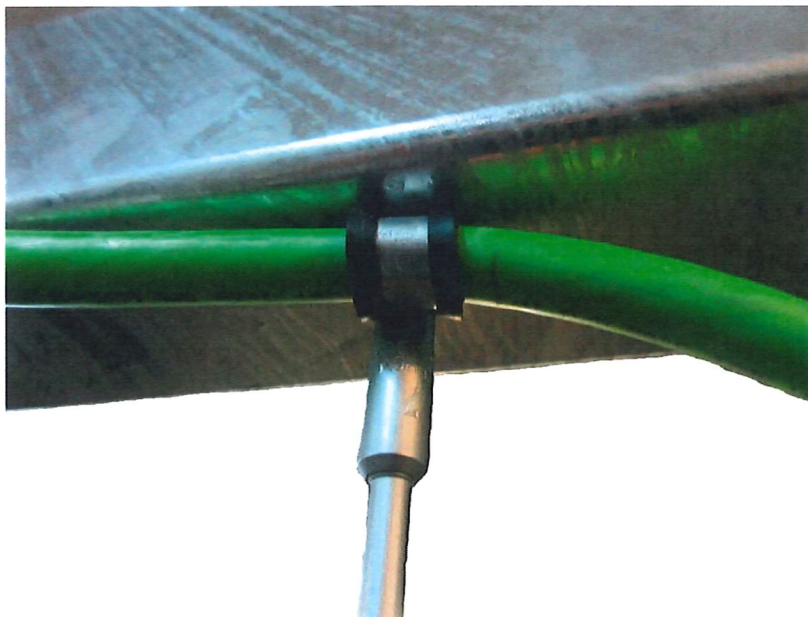
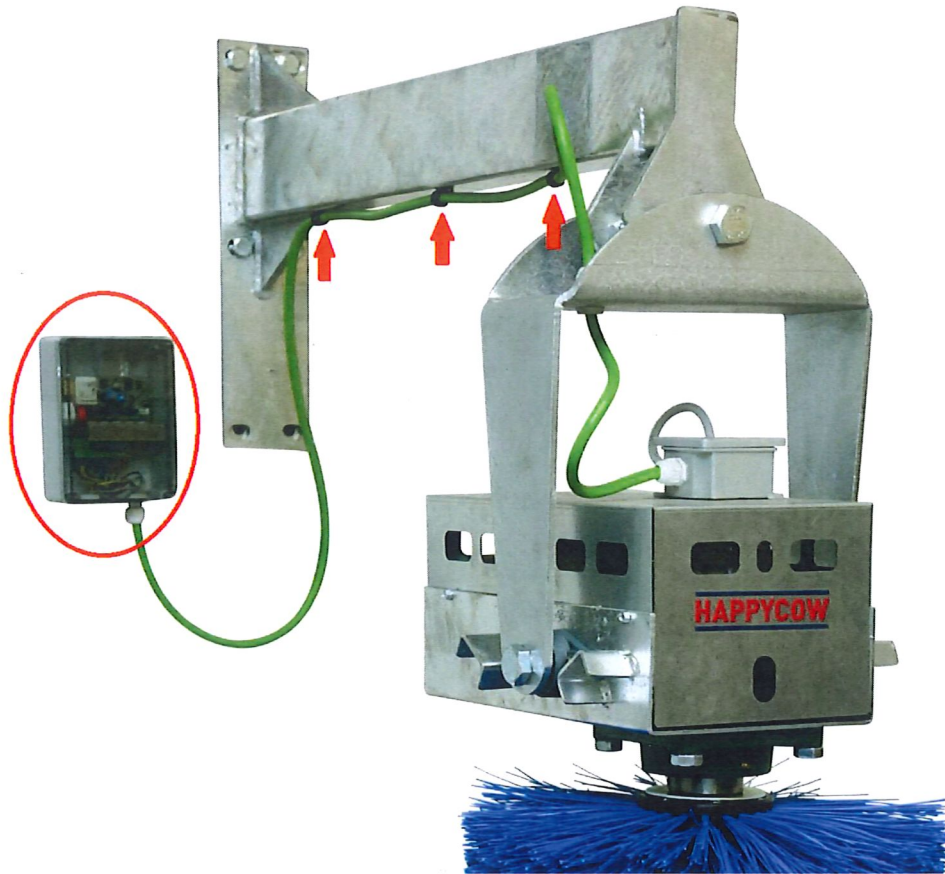
1. DE –Spannungsversorgung unterbrechen  
EN – disconnect the power supply



2. DE – Grüne Steuerleitung beim Sensorgehäuse ausklemmen  
EN – disconnect green control cable at sensor



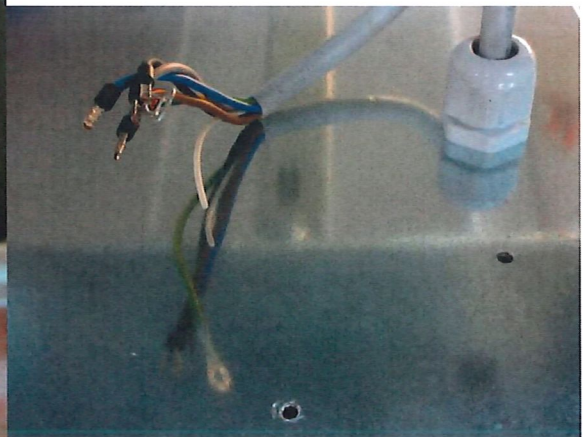
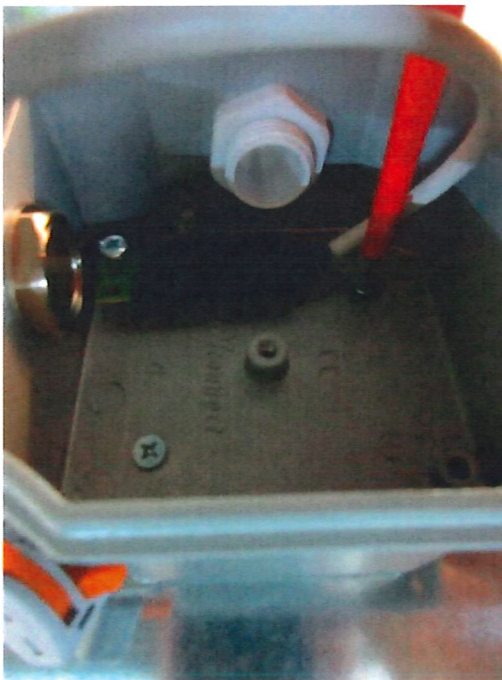
3. DE- Grüne Steuerleitung und alte Steuerung demontieren  
EN – remove old control unit and green control cable



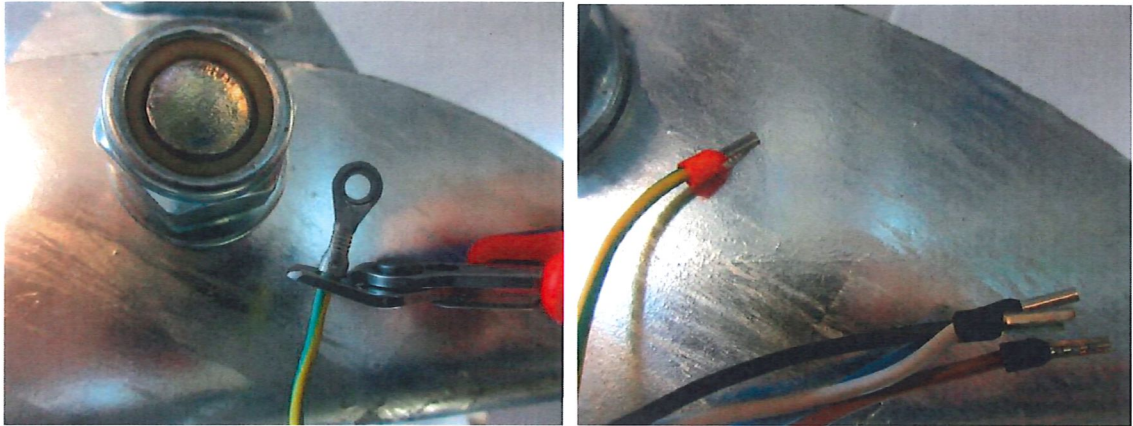
4. DE- Motorkabel am Sensor ausklemmen  
EN – disconnect the motor cable at sensor



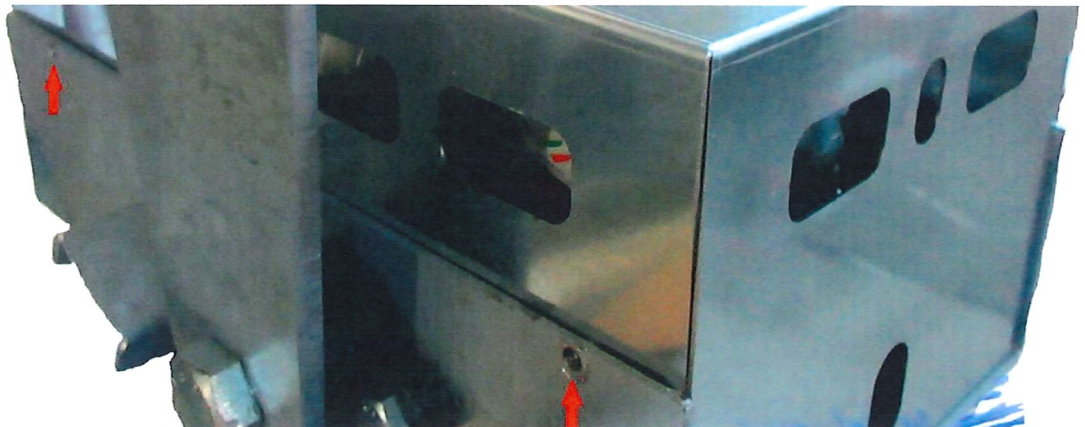
5. DE- Sensorgehäuse demontieren  
EN – demount the housing of sensor



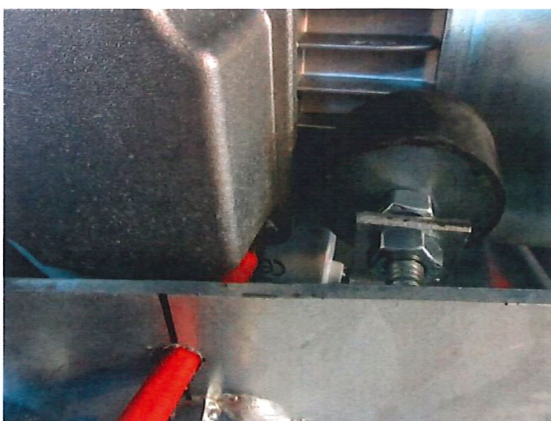
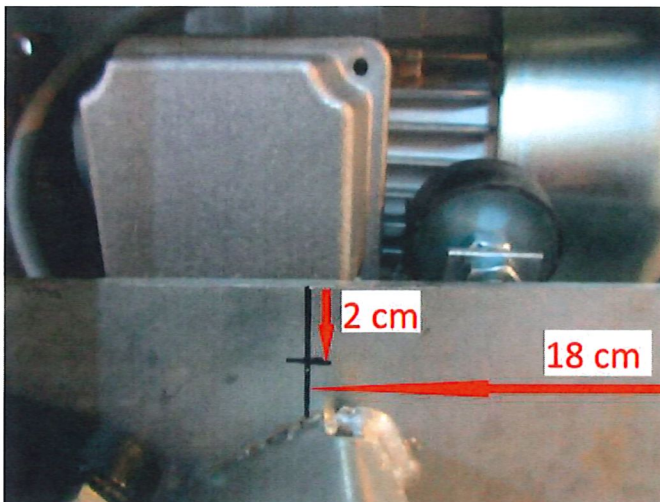
6. DE- Aderendhülse statt Ringöse aufcrimpen  
EN – crimp cable end sleeve instead of ring



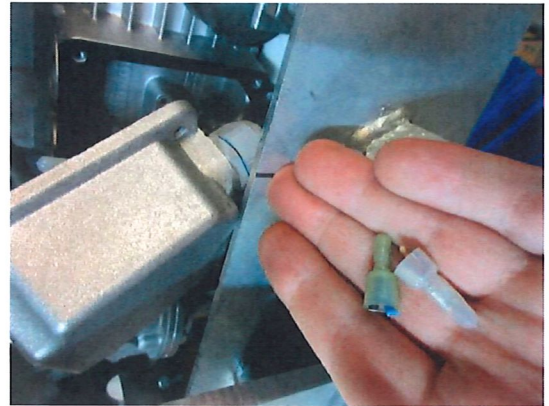
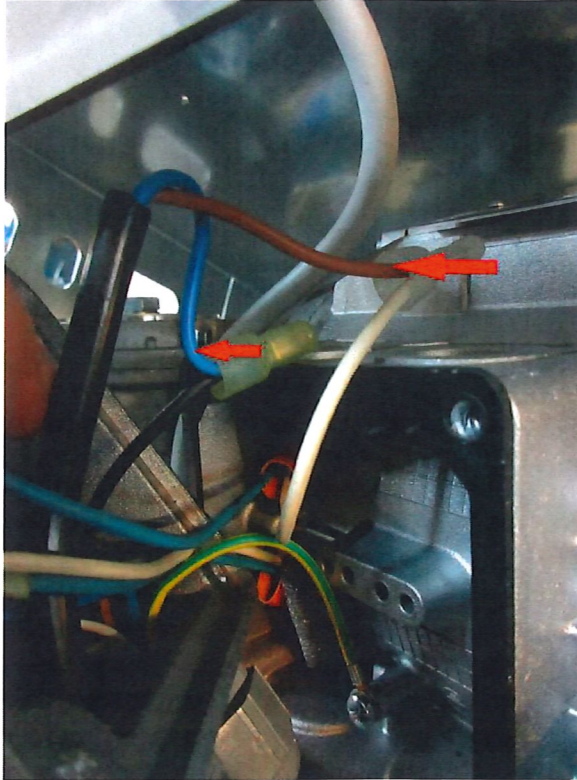
7. DE- Metallrahmen öffnen  
EN – open metal housing



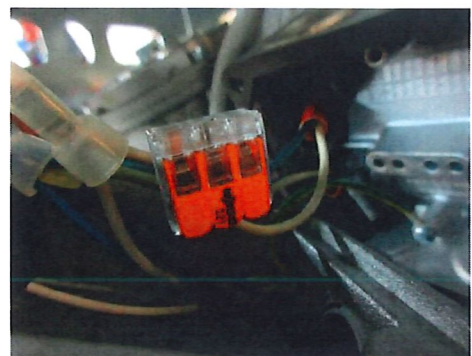
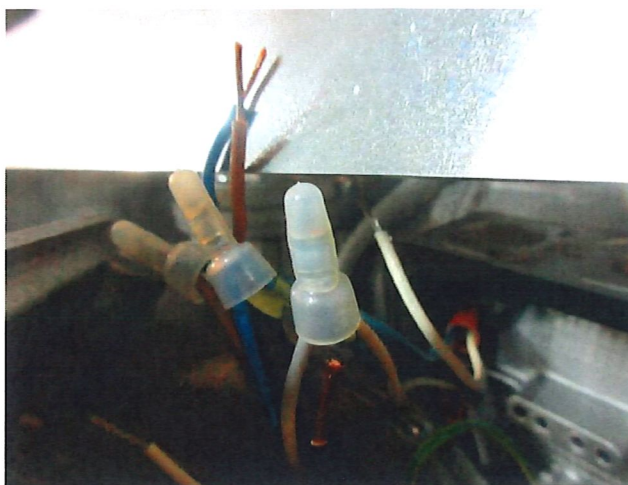
8. DE- Motorklemmdose öffnen  
EN – open motor connection box



9. DE- Drähte des Kondensators trennen und isolieren  
EN – disconnect and insulate wires of capacitor



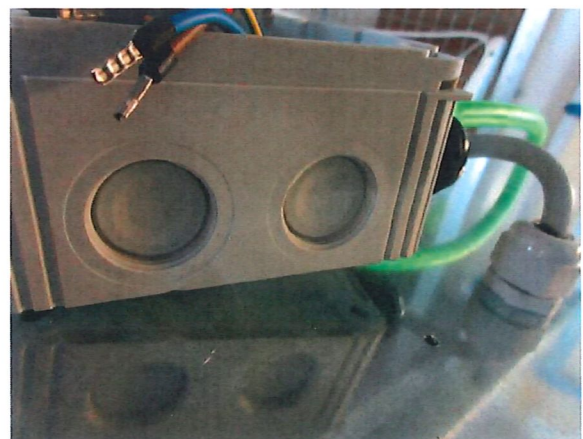
10. DE- Drähte neu vorbereiten und mit Klemme direkt verbinden (schwarzer und weißer Draht)  
EN – prepare the wires and connect directly with clamp (black and white wire)



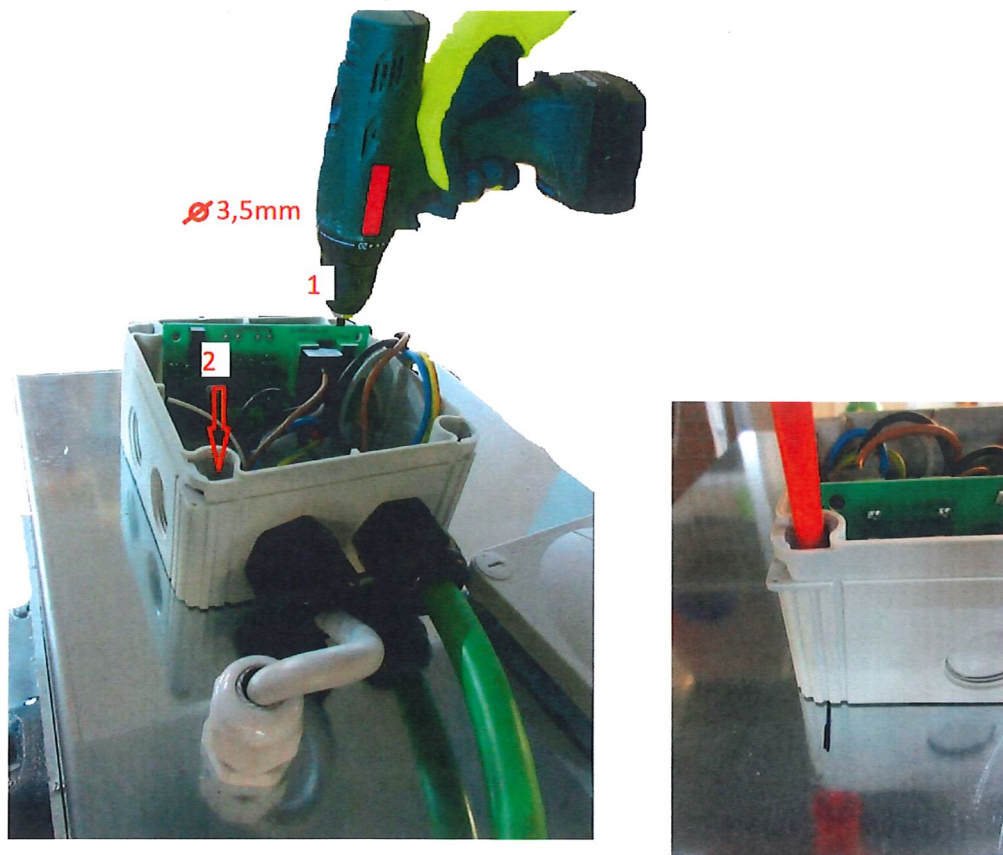
11. DE- Klemmkasten und Metallrahmen schließen  
EN – close motor connection box and metal housing



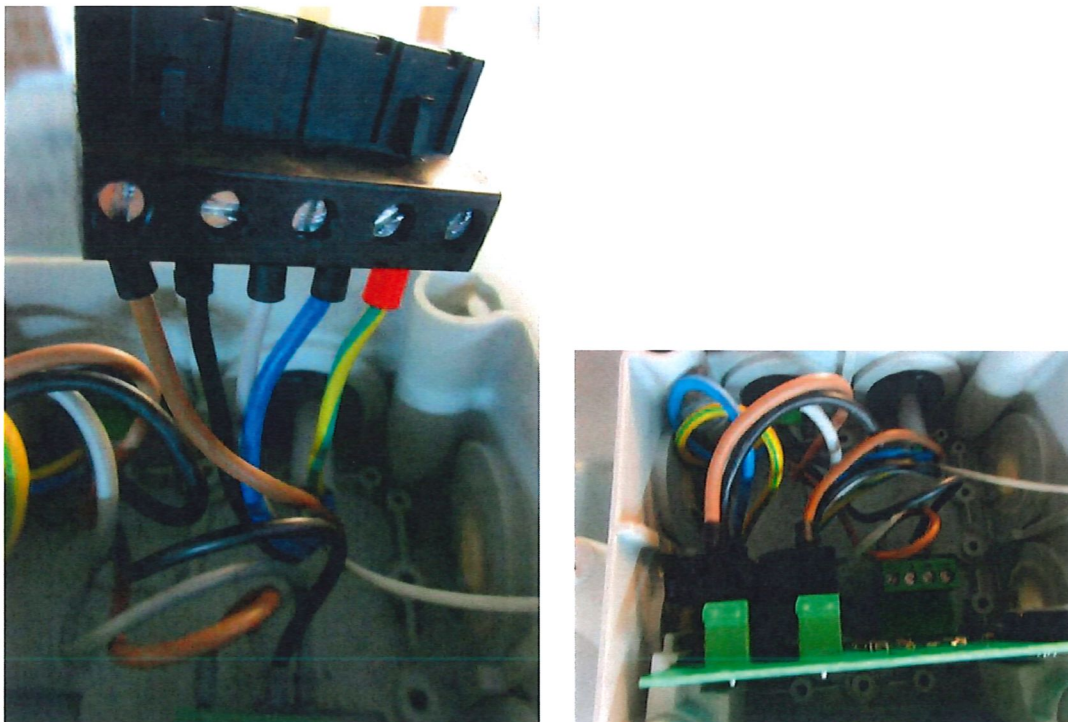
12. DE- neuen Sensor montieren und Motorkabel einführen  
EN – mount new sensor and enter motor cable





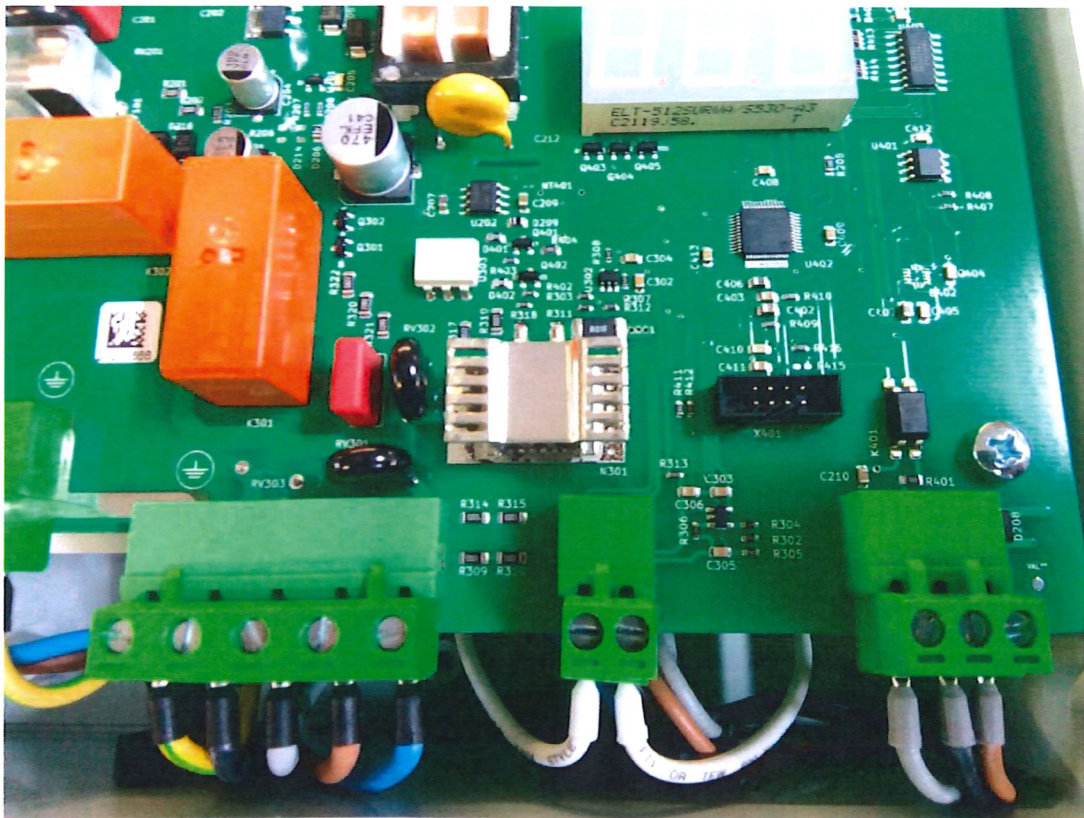


13. DE- Motorkabel einklemmen und auf freiem Steckplatz einstecken  
EN – connect motor cable and plug into free socket on PCB



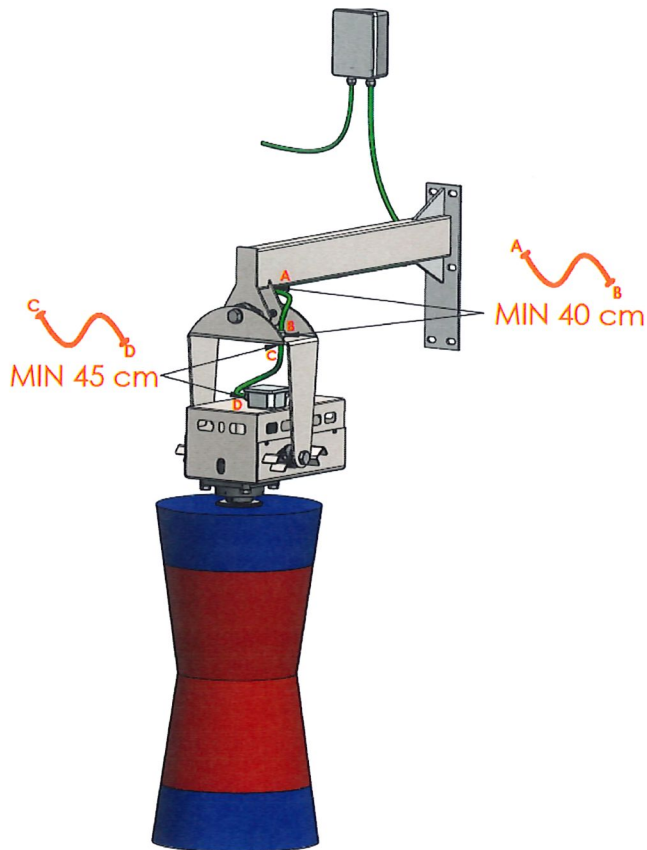


14. DE- Grüne Steuerleitung an neuer Steuerung einklemmen  
EN – Connect green control cable on new control unit



## 15. DE- Grüne Steuerleitung verlegen und neue Steuerung montieren EN – mount the green control cable and new control unit

Kabellänge Maschine Typ A /  
cable length machine type A



Kabellänge Maschine Typ B /  
cable length machine type B

